

QUICK INSTALLATION GUIDE

VIKING COMPONENTS 56K USB MODEM (MAC OS 8.5 or Later)

HARDWARE INSTALLATION

Warning: The phone jack you use must be for an analog phone line. If you are in an office building, it may use digital phone lines. If you are not sure of the type of phone lines your office building has, contact your phone system administrator.

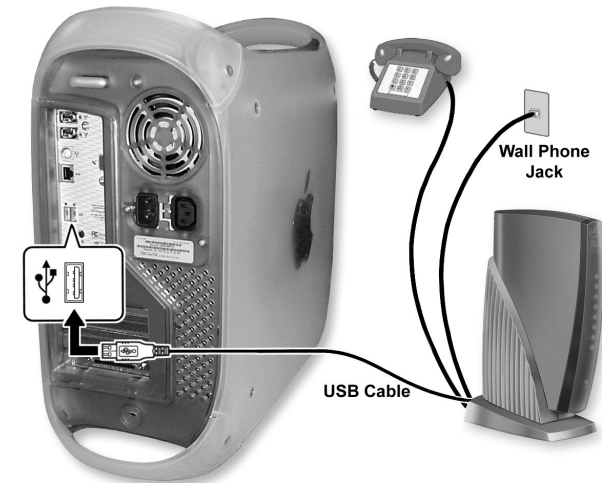
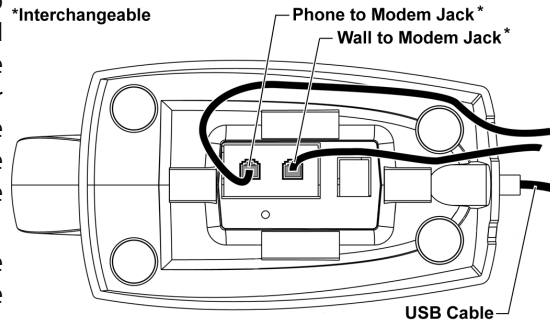
1. Rest the modem on its side. Locate the two phone cord jacks toward the center of the bottom panel. These jacks are interchangeable when connecting the modem to a wall jack and a phone. Plug one end of a phone cord into one of the jacks and the other end to the phone jack located on the wall. If you wish to use your modem and phone through the same wall phone jack, plug the cord from your phone into the remaining jack on the modem.

Note: You can not use the phone and the modem at the same time if they share the same phone line.

2. Return the modem right side up and feed the phone cables through the back of its base.

3. Power on your computer.

4. Locate an available USB port on your computer and connect it with the USB cable on the back of the modem. This port is usually located on the back of your system. If you are not familiar with the location of the USB ports on your computer, please refer to your systems "Owner's Guide" for detailed instructions.



Note: The Viking Components USB modem must be connected to a USB port on your computer or to a powered USB hub.

Your hardware setup is now complete. To complete the setup of your modem, please proceed to the section "Software Installation" in this guide.

1

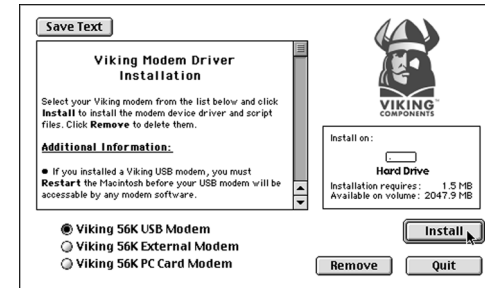
SOFTWARE INSTALLATION

Mac OS 8.5 or Later Driver Software

1. Insert the "Viking Modem Companion Software" CD into your computer's CD-ROM drive. Once the CD appears on your system's desktop, double-click on its icon to open. Locate the "Viking Modem Installer" icon on the CD and double-click on it to launch.

Note: If the CD was not included or lost, the drivers can be downloaded from our Web site at: www.vikingcomponents.com

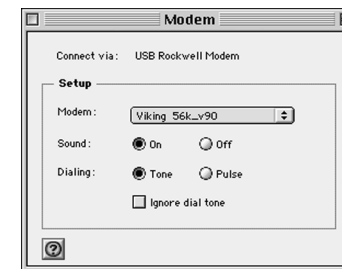
3. Select "Viking 56K USB Modem" by clicking on its button. Then click the "Install" button to begin the driver installation.



4. Once the driver installation is done, click the "Quit" button to leave the installer.

5. Click the "Restart" button to restart your system.

6. From the Apple () menu, select "Control Panel" and then choose "Modem." Next to "Connect via:" the "USB Rockwell Modem" should be listed. Locate the "Modem:" pop-up menu in the "Setup" section. If your Internet Service Provider (ISP) supports 56KFlex and V.90, select "Viking 56k_v90." For ISP's that only support 56KFlex, select "Viking force 56kflex." Then close the "Modem" control panel and click the "Save" button.



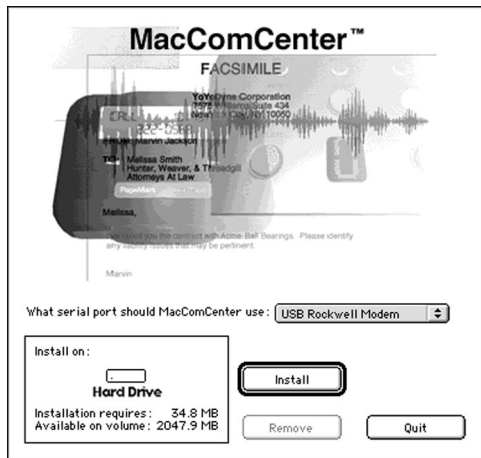
Your driver installation is now complete.

MacComCenter Communication Software

1. Insert the "Viking Modem Companion Software" CD in your computer's CD-ROM drive. Once the CD appears on your system's desktop, double-click on its icon to open. Locate the "MacComCenter" icon on the CD and double-click on it to launch.

2

2. In the "MacComCenter" window, the "USB Rockwell Modem" should be selected in the "What serial port should MacComCenter use:" pop-up menu. Click the "Install" button to begin the communication software installation.



3. Once the software for MacComCenter has been loaded, a modem description window will appear. Click the "OK" button to continue with the software setup.

4. The "MacComCenter Assistant" will guide you through the rest of the setup procedure. Follow the onscreen instructions until the setup has been completed.

Your MacComCenter software installation is now complete.

Remote Access/Mac PPP Setup

1. From the Apple menu, select "Control Panel" and then choose "TCP/IP." From the "Connect Via" pop-up menu, choose "PPP." From the "Configure" pop-up menu, choose "PPP Server." In the text box labeled "IP Address," enter the IP address given to you by your ISP. In the text box labeled "Domain Name," enter the domain name given to you by your ISP. Close the "TCP/IP" control panel and click "Save."

2. From the Apple menu, select "Control Panel" and then choose "Remote Access/PPP." Enter your user name, password and phone number in their appropriate text fields.

Your software installation and setup is now complete.

Free PPP Setup

The Viking Apple Modem Script is not required for this setup. This setup is for version 2.6.2 of Free PPP.

1. Double-click the "Free PPP Setup" application.

2. Click the small arrow at the bottom left of the window for the pop-up menu. Choose "General" from the pop-up menu and click the checkbox "Disconnect If Idle" to disable.

3. Choose "Accounts" from the pop-up menu and click "New." Complete all text fields under "Account" and "Dialup." Then click "OK."

4. Choose "Modems" from the pop-up menu and click "New." Give the modem a name. Select a modem from "Connected To." Set the port speed to 115200. Add the AT Command: AT&FW2+MS=12,1 to the init string setting for V.90 preferred and click "OK."

5. Click "Open TCP/IP." The "Connect Via" pop-up menu should have "Free PPP" chosen and the "Configure" pop-up menu should have "PPP Server" chosen. Complete the text fields "Server Address" and "Search Domains." Close and click "Save."

Your software installation and setup is now complete.

ADDITIONAL INFORMATION

The following information can be found in the supplied Viking "User's Guide": software installation (with screen shoots), specifications, requirements, technical notes, USB basics, basic troubleshooting, basic AT Commands, modem drivers, firmware upgrades, contacting technical support, communication regulations and warranty.



U.S. Headquarters

30200 Avenida de las Banderas
Rancho Santa Margarita, CA 92688
Tel: 949-643-7255 • Fax: 949-643-7274
www.vikingcomponents.com

SPEED • POWER • PERFORMANCE®

Copyright © 1999 Viking Components, Inc.
Manual No. 1005279 • Release 03/99, Rev. A